

Foreign Language Support

This document is intended for users who are familiar with how to create Schoolnet items and tests. See also: *Basics of Item Creation Quick Reference Card*.

Assessment and item creators can create and search for assessment items, passages and rubrics in non-English languages to support ELL students and foreign language courses. Assessment content can be tagged for Chinese*, French, German, Italian, Latin and Spanish and American Sign Language (ASL). If missing, ask a site administrator to enable.

* Chinese Pinyin and Simplified Chinese are officially supported. Traditional Chinese (Cantonese) is unofficially supported, although not for screen readers.

Create Foreign Language Items

Assessment and item creators can specify a question language under the Additional Properties section when they create items, passages and rubrics. The Response Language can be specified under Additional Properties or Online Student Response Options. Question language is used to support searching; it does not provide translation.

Additional Properties (Optional)

Name

Author

Keywords

Question Language

Response Language

ONLINE STUDENT RESPONSE OPTIONS

Response Language

Text Editor

Simple Rich text formatting toolbar Equation Editor

Special Character Palette

When authoring content, you can use the special character palette to add accented characters. International keyboards also work, as do software-based Input Method Editors (IMEs).

¿Cómo sería ser un estudiante de intercambio?

Paragraph Font Family 12pt B I

✂️ 📄 📁 📂 ↶ ↷ ⏪ ⏩ ABC T Ω 🔗 🗑️ 🗨️ 🗨️

Special character

€	£	¥	¢	™	®	µ	...	'	§	¶	β	<	>	«	»	·
ˆ	˜	˘	˙	˚	˛	˜	˘	˙	˚	˛	˜	˘	˙	˚	˛	˜
×	ˆ	˜	˘	˙	˚	˛	˜	˘	˙	˚	˛	˜	˘	˙	˚	˛
U	ø	∃	∅	∇	∞	∠	∞	∠	∞	∠	∞	∠	∞	∠	∞	∠
É	È	í	î	ï	ñ	ó	ô	õ	ö	ø	œ	š	ù	ú	ý	ÿ
á	â	ã	ä	å	æ	ç	è	é	ê	ë	ì	í	î	ï	ñ	ó
ò	ó	ô	õ	ö	ø	œ	š	ù	ú	ý	ÿ	á	â	ã	ä	å
ú	û	ü	ÿ	ÿ	ÿ	ÿ	ÿ	ÿ	ÿ	ÿ	ÿ	ÿ	ÿ	ÿ	ÿ	ÿ
ÿ	ÿ	ÿ	ÿ	ÿ	ÿ	ÿ	ÿ	ÿ	ÿ	ÿ	ÿ	ÿ	ÿ	ÿ	ÿ	ÿ
ÿ	ÿ	ÿ	ÿ	ÿ	ÿ	ÿ	ÿ	ÿ	ÿ	ÿ	ÿ	ÿ	ÿ	ÿ	ÿ	ÿ
ÿ	ÿ	ÿ	ÿ	ÿ	ÿ	ÿ	ÿ	ÿ	ÿ	ÿ	ÿ	ÿ	ÿ	ÿ	ÿ	ÿ

i - grave

Close

Enable Special Character Palette for Students

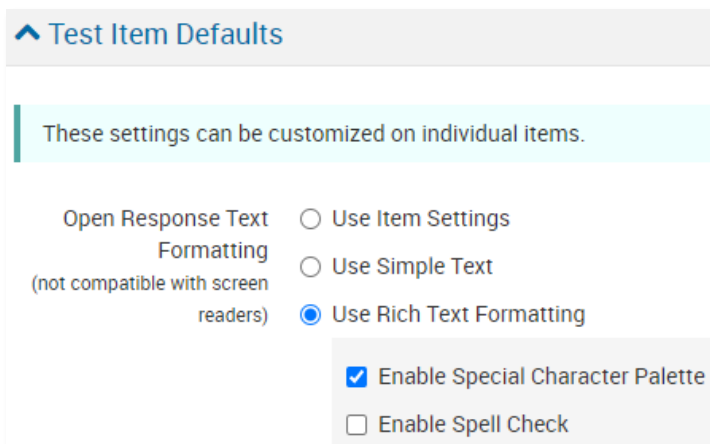
The special character palette for responding online to Spanish and French open response items can be enabled by item or for an entire test. To make it available, enable it when you create the test or by

Foreign Language Support

modifying the settings of an existing test in the Test Settings > Test Item Defaults section. This feature is not available when using the equation editor.

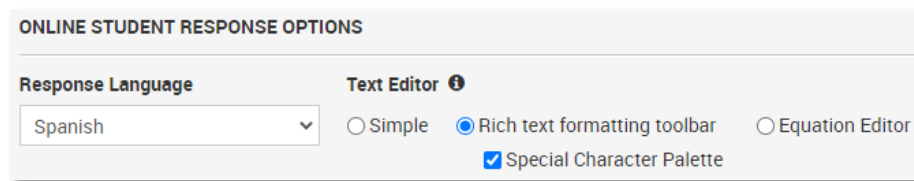
To enable the palette when creating a test:

1. On the Create Test page of a manual or express test, open **Test Item Defaults**
2. For the Open Response Text Formatting option, select 'Use Rich Text Formatting' and then check 'Enable Special Character Palette'



To enable the palette by item:

On the item creation or edit page, select 'Special Character Palette' which is available for English, Spanish and French response languages.



Student Use of the Special Character Palette

Students can access language-specific character accents on online tests if the item is enabled for the special character palette.



TestNav special character feature for students

Search for Existing Foreign Language Items

Question Language:

None Selected

Assessment creators can search by question language using the available option in the left column of filters.

Item Banks

Select Banks

Tip for Site Administrators: Group Spanish items in their own bank so users can easily turn bank on or off when searching.

Filter by Language When Creating an Express Test

Assessment creators can filter by question language while creating express tests. In the Define Test Map section, open the Advanced Filter and select the desired question language. Then click **Apply**.

